



# TH TRASH HANDLING BUCKET

**DESIGNED TO PERFORM**

## Use the right tool for the job!

Nothing makes a job easier than using the right tools. If you're a carpenter, you use a hammer. If you're a football player - you wear cleats, not ice skates. And if you're handling trash, you should use a trash bucket.

Until recently, handling trash was thought to be the same as handling most other light material. Bucket designers seemed to forget about concrete floors, visibility needs, and the fact that trash buckets scrape repeatedly against concrete walls and other obstacles. It's a fact that standard buckets simply do not stand up to the demanding environment of a transfer station.



Working closely with transfer station owners, supervisors, and equipment operators, Rockland created TH Trash Handling Buckets specifically for the demanding trash handling environment. You won't find these features on standard buckets :

### **HIGH VIZ SLOTTED SPILLGUARDS -**

Operators can see where they are going and what sort of load they have.

### **TOUGH, HIGH STRENGTH ALLOY STEEL CONSTRUCTION -**

This means more capacity, less weight, and longer life.

### **BOLT-ON SKID SHOES -**

Standard equipment on Rockland TH Buckets and either unavailable or an expensive option on other buckets.

### **BUCKET ENDS -**

Replaceable, oversized cheek plates and double thick corner blocks plus a rugged center end plate stiffener combat lower corner wear and end plate wear resulting from constantly rubbing floors and walls.

### **CLIPPED CORNERS -**

This little extra detail prevents the spillguard corners from accidentally snagging truck bodies, building columns, and metal siding.

### **CUTTING EDGE OPTIONS -**

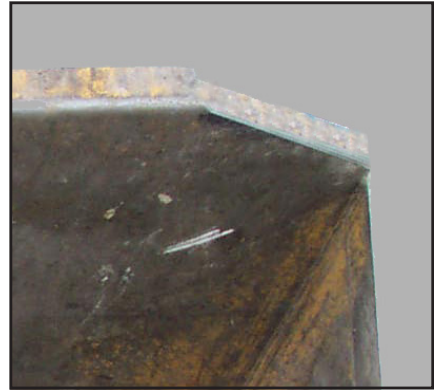
Set up your TH Bucket specifically for your operation. Bolt-on rubber edges or your favorite reversible bolt-on edges are available.



(SHOWN WITHOUT SPILLGUARD)

# GET THE RIGHT TOOL FOR THE JOB

Rockland TH Trash Handling Buckets give you a bigger load on every pass. The cheek plates, heavy-duty sidecutters, and standard bolt-on skid shoes all combine to keep your bucket working and out of the maintenance shop. Little details like clipped corners prove that Rockland's attention to detail will pay off at your operation.



## SPECIFICATIONS

Category	30,40	30,40	40,50	50	50	50	60	60	60	60	60
<b>Capacity (Yd<sup>3</sup>)</b>	<b>5</b> 3.82	<b>5.5</b> 4.21	<b>6</b> 4.59	<b>6.5</b> 4.97	<b>7</b> 5.35	<b>7.5</b> 5.73	<b>8</b> 6.12	<b>8.5</b> 6.50	<b>9</b> 6.88	<b>9.5</b> 7.26	<b>10</b> 7.65
<b>Width (")</b>	<b>120</b> 3048	<b>120</b> 3048	<b>120</b> 3048	<b>136</b> 3454	<b>136</b> 3454	<b>136</b> 3454	<b>144</b> 3658	<b>144</b> 3658	<b>158</b> 4013	<b>158</b> 4013	<b>158</b> 4013
<b>Weight (lbs.)</b>	<b>3780</b> 1715	<b>3980</b> 1805	<b>4600</b> 2087	<b>5075</b> 2302	<b>5150</b> 2336	<b>5235</b> 2375	<b>6025</b> 2733	<b>6325</b> 2869	<b>6930</b> 3143	<b>7030</b> 3189	<b>7130</b> 3234

Category	60	60,70	70	70	70	70	70	70,80	70,80	80
<b>Capacity (Yd<sup>3</sup>)</b>	<b>10.5</b> 8.03	<b>11</b> 8.41	<b>11.5</b> 8.79	<b>12</b> 9.17	<b>12.5</b> 9.56	<b>13</b> 9.94	<b>13.5</b> 10.32	<b>14</b> 10.70	<b>14.5</b> 11.09	<b>15</b> 11.47
<b>Width (")</b>	<b>168</b> 4267	<b>168</b> 4267	<b>178</b> 4521	<b>178</b> 4521	<b>178</b> 4521	<b>178</b> 4521	<b>178</b> 4521	<b>178</b> 4521	<b>178</b> 4521	<b>178</b> 4521
<b>Weight (lbs.)</b>	<b>7410</b> 3361	<b>7510</b> 3406	<b>7675</b> 3481	<b>7875</b> 3572	<b>7975</b> 3617	<b>8220</b> 3729	<b>8300</b> 3765	<b>9725</b> 4411	<b>9925</b> 4502	<b>10125</b> 4593

(mm/kg)

Specifications subject to change without notice.

## INSTALLATION INFORMATION

All Rockland TH Trash Handling Buckets mount in place of the standard bucket using factory pins or specified coupler brackets.

### WARRANTY

Rockland TH Trash Handling Buckets are guaranteed against failure due to defective design, workmanship or materials for a period of two years or 4000 hours.



Distributed by:

**ROCKLAND MANUFACTURING CO.**  
**P O BOX 5**  
**BEDFORD, PA 15522**  
**800-458-3773**  
[www.rocklandmfg.com](http://www.rocklandmfg.com)